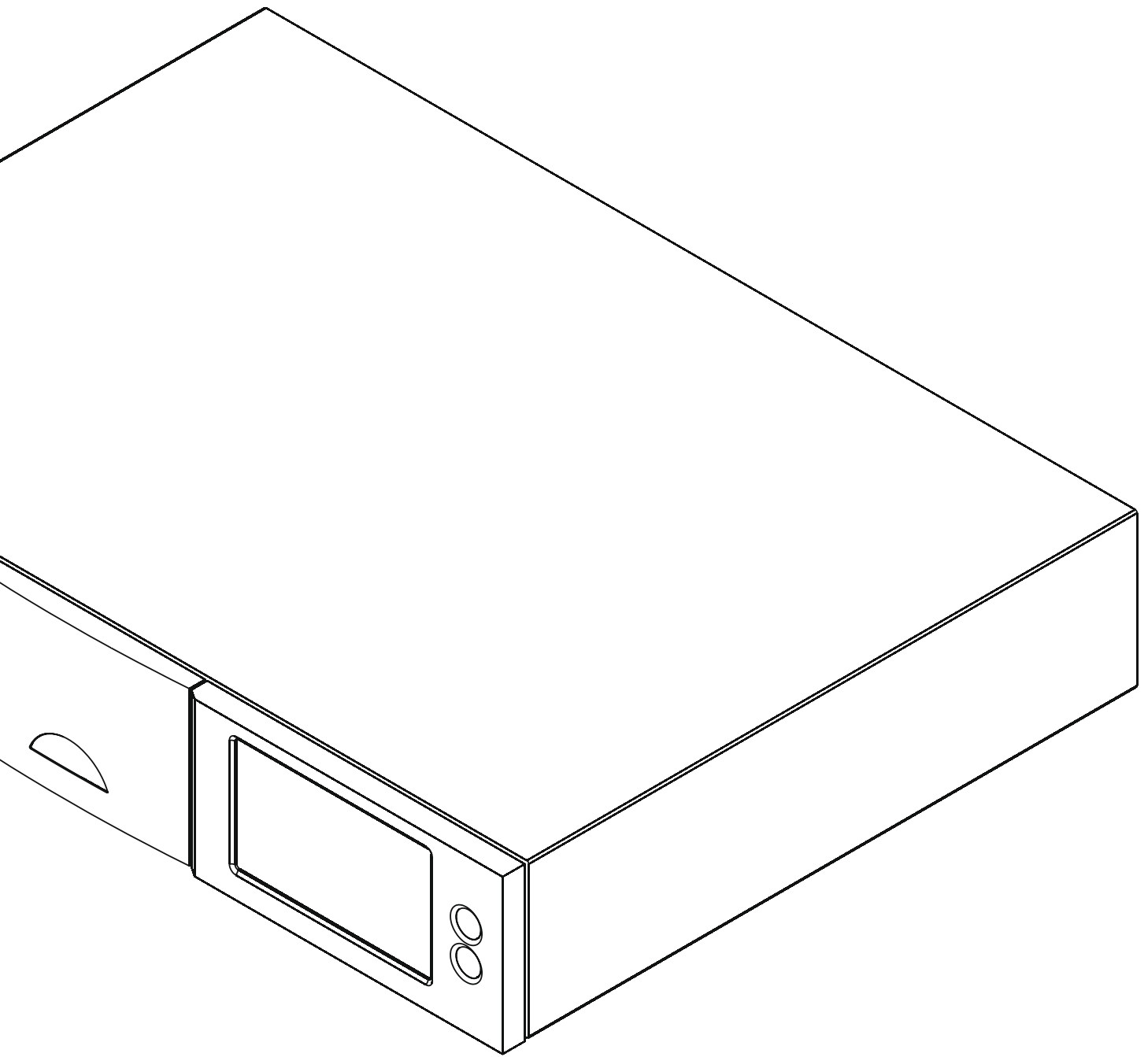




world class sound...



HDX HARD DISK PLAYER
iTunes Playlists For Mac OS X
Supplement

HDX and iTunes Playlists (Mac) Supplement

Introduction

This document is intended to help users in making their iTunes library playlists on an Apple Macintosh computer available to Naim and NaimNet hard disk player and music server products (HDX, NS01, NS02 and NS03).

iTunes playlists can be made available to an HDX only once the iTunes library itself has been configured to be available as described in the HDX iTunes for Mac OS X Supplement.

Note: The procedures described in this manual are congruent with Mac OS X Leopard 10.5.7 and iTunes 8.2.1. The procedures for alternative software versions may differ slightly.

Note: Reference to the HDX throughout this document should be taken also to include the NaimNet NS01, NS02 and NS03 music servers.

1 Creating iTunes Scripts

Making iTunes playlists available to an HDX first requires an iTunes script to be placed in an appropriate location on the iTunes host Mac. To do this follow the steps below.

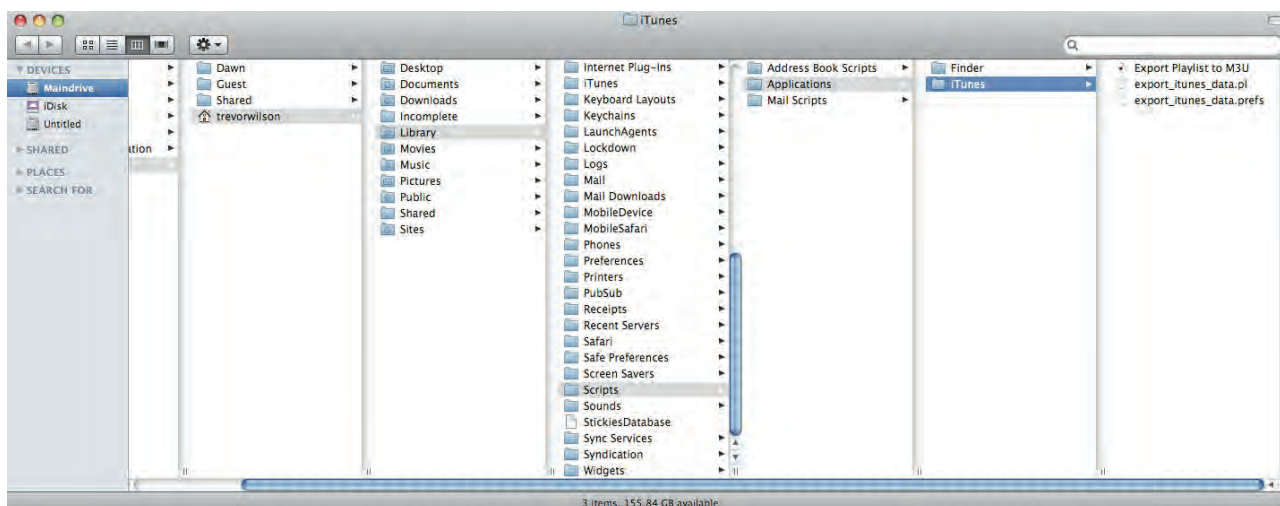
1. Create a folder called **Scripts** in the Users > username > Library > iTunes folder.

Note: The appropriate path to the Users > username > Library > iTunes folder may vary slightly from one Mac OS to another.

2. Download an apple script called **Export Playlist to M3U** from:
<http://mac.bytes.net/cat/mac/audio/export-itunes-playlist-to-m3u/>

Note: You will need stuffit expander to open the download file. This can be downloaded from:
<http://my.smithmicro.com/mac/stuffit/expander.html>

3. Once the script files have been downloaded and "un-stuffed" they should be copied into the Scripts folder just created. The image below shows the location of the script in a user account folder. Once the script files have been placed in the correct location the **Export Playlist to M3U** script will appear in iTunes under the **Scripts** menu.



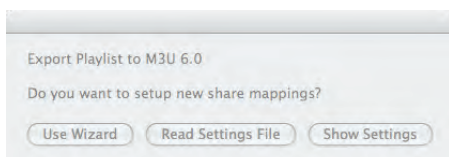
Naim Audio Ltd. cannot be held responsible for any consequences of installing or using third party software.

Apple Macintosh, Mac, OS X, and iTunes are trademarks of Apple Inc., registered in the U.S. and other countries. Windows is a trademark of Microsoft Corporation.

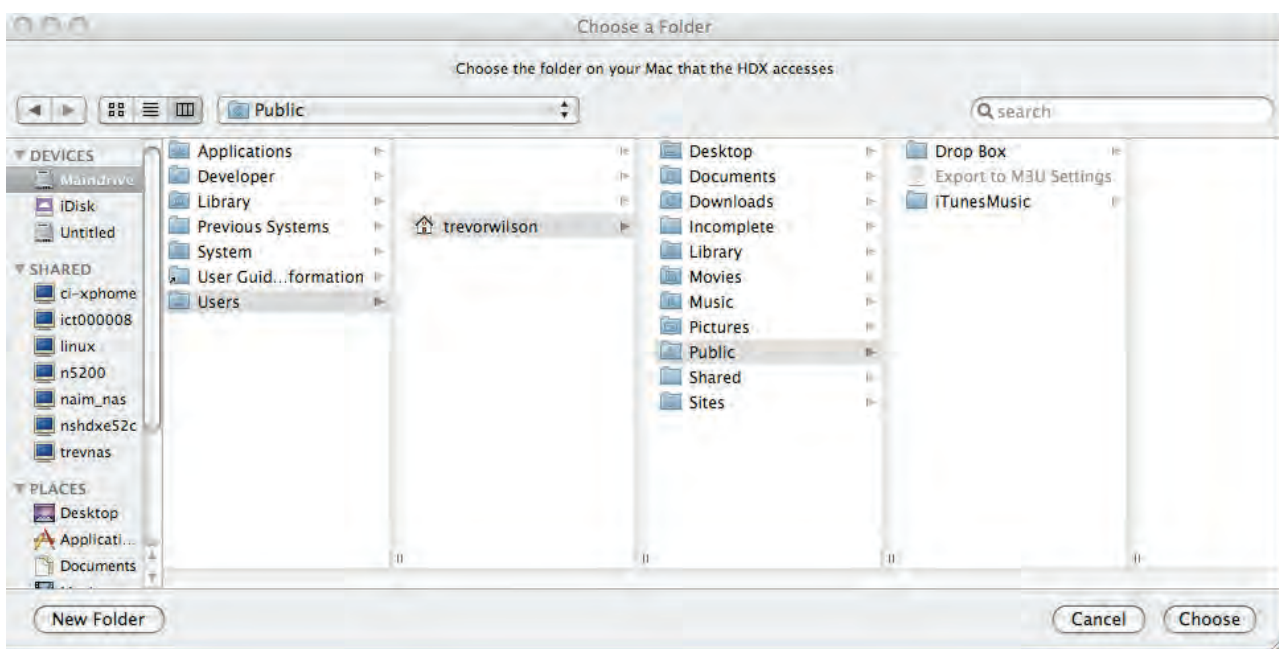
HDX and iTunes Playlists (Mac) Supplement

2 iTunes Script Setup

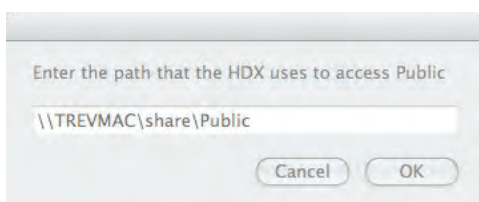
Opening the iTunes script (either from iTunes or the Finder) will run a “wizard” that handles the process of setting up the path maps on the Mac and the paths that the HDX will use (via Samba (Windows) File Sharing). The following dialogue box will be displayed:



Click the **Use Wizard** button to commence the mapping process. You will be asked to choose the folder on the Mac that the HDX accesses.

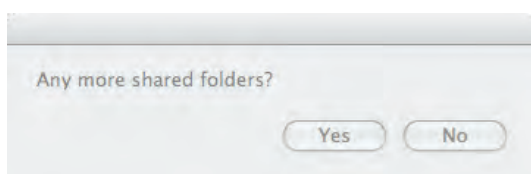


Navigate to the folder (such as iTunes Music as shown above) and click on the **Choose** button. You will then be asked to enter the path that the HDX uses to access that directory on your Mac.

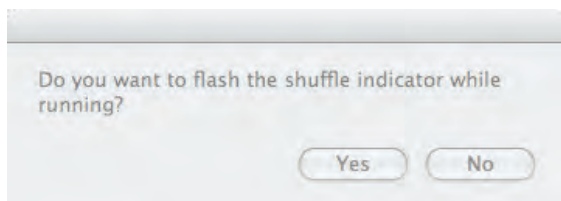


Type in the first part of the path that the HDX uses to access this folder. The path name is in the UNC format starting with two back-slashes and the server name, followed by the share name, then most likely a folder name. If you're unsure about what to enter here, see the next section for an example. After entering the path, click **OK**. You will be asked if you have any more mappings (Shared Folders) to enter.

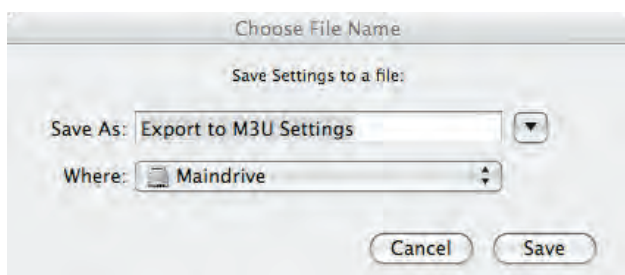
HDX and iTunes Playlists (Mac) Supplement



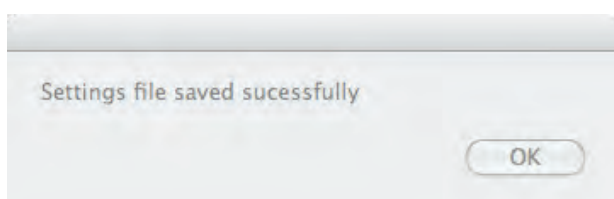
If you have a more complex network setup requiring multiple mappings, click **Yes** and you will be prompted to choose another folder on your Mac. Most of the time, there will only be one mapping, in which case you may click **No**. At the next prompt you will be asked to choose whether or not you want shuffle indication while the script is running.



If you export long playlists, then having some sort of indication that the script is doing something may be important to you, so select **Yes**. Selecting Yes does however have the side effect of turning on fixed indexing so that the output order in the file may not match the displayed order because it uses the original order in which the songs were added to the playlist. If output order is important to you, then select **No**. When you have chosen an option you will be prompted to save the settings to a file.



After the settings file has been saved, the following dialogue is displayed. The settings file can be used when future versions of the script are released so that you don't have to go through the wizard setup process next time.



3 An Example

Following is a setup example that provides a detailed illustration of mapping a single directory used for iTunes and shared via Samba.

The folder chosen on the Mac is at the highest level shared with the HDX. The full path to files in iTunes can be seen by clicking on a song and selecting **File > Get Info**. It will be something like this:

Macintosh HD:Users:username:Music:Artist:Album:Song.mp3

HDX and iTunes Playlists (Mac) Supplement

Now compare that path to the path the HDX uses to the same song. This will help you fill in the PC-style UNC pathname to map to the same folder on the Mac. To view the path names the HDX uses, open up the web interface when the HDX is playing the same song, then click on the field next the **Location** that says **Click here for file location**. This will display something like this:

```
\\SERVER\username\Music\Artist\Album\Song.mp3
```

Now you're armed with the information you need to get things set up. The first step is choosing the folder on your Mac. In this case, choose the Music folder under Macintosh HD:Users:username. Next, you would enter \\SERVER\username\Music for the path that the HDX uses to access that same folder.

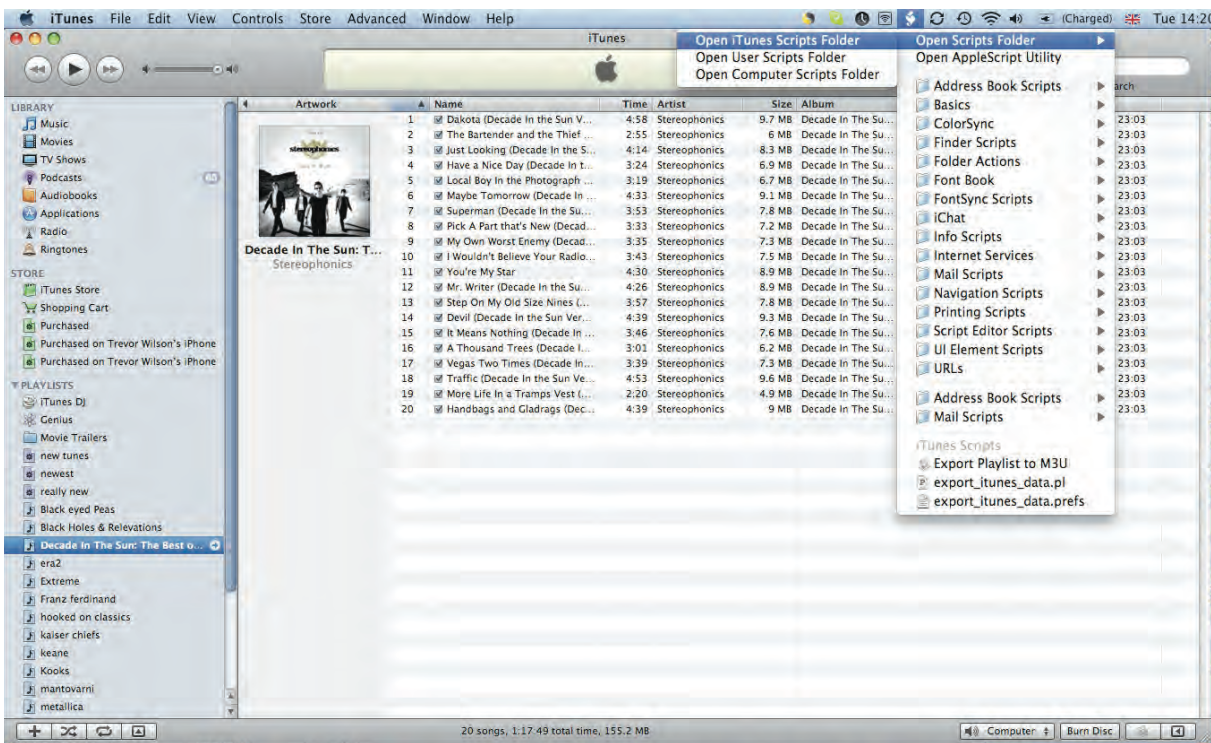
Note: The information for the SERVER can be found in OS X under system preferences -> sharing in the field: Computer Name

If you had multiple shares in Samba, or more than one mounted network drive, then you might need more mappings. If you need help, feel free to contact support@naimaudio.com.

How To Use It

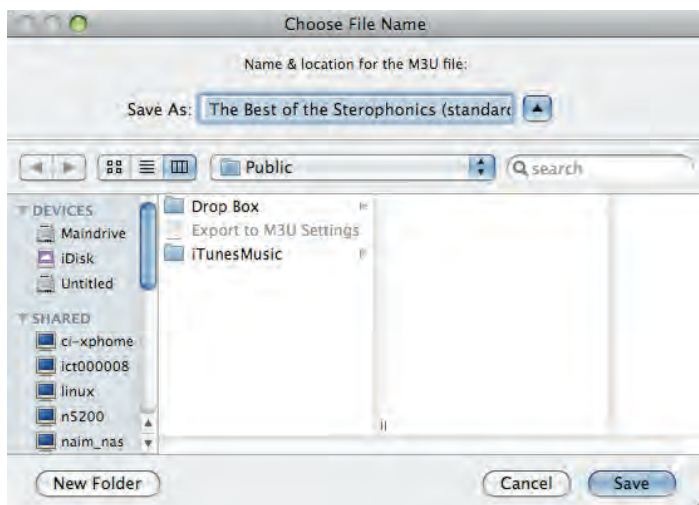
After you have done the setup, the following screen snapshots show how to use the script. When you open iTunes, you will notice an AppleScript icon on the top right bar (near the time indicator). Select a playlist from the "Source" area on the left side of the screen. When you pull-down on the AppleScript icon, you should see the script (as you have named it) in the menu.

You then need to select and double click the file called **Export Playlist to M3U** in the folder that opens.



HDX and iTunes Playlists (Mac) Supplement

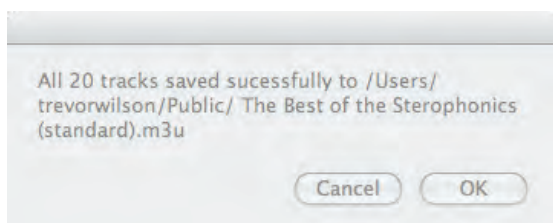
After you have started the script (by releasing the mouse button), it will prompt you to choose a name and output location.



As the script is running, if you enabled the option, then the shuffle button will blink on and off.



When the script is complete, it will display with a dialogue which indicated how many tracks were written to the output file.



And that's it! You may have to move the file into wherever your HDX searches for files. Next, tell your HDX to search for new files (via the web interface or the options button on the HDX Front Panel Display), then the new playlist should be available. If you are updating an existing playlist, you will not need to tell the HDX to search for new files. The next time you select the playlist, it will see the new contents.

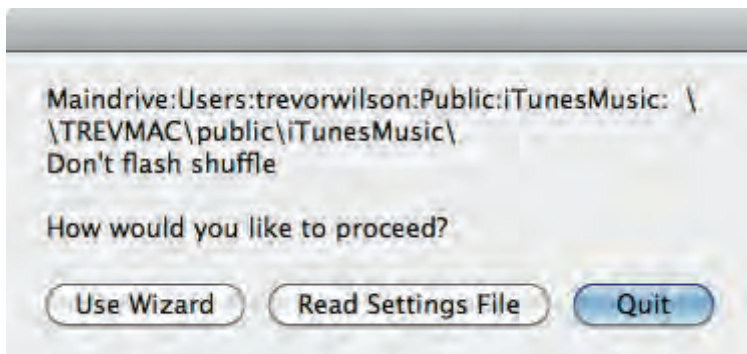
Changing Settings

To revise the settings thanks to a change in the network configuration or name change, for example, quit iTunes, then launch **Export Playlist to M3U** from the Finder. The following dialogue will be displayed.



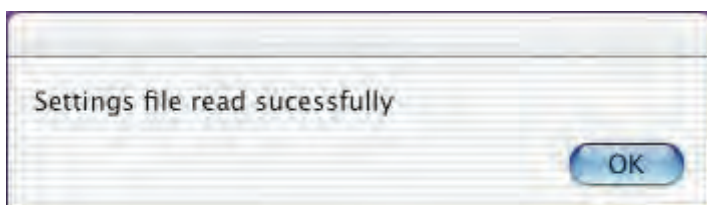
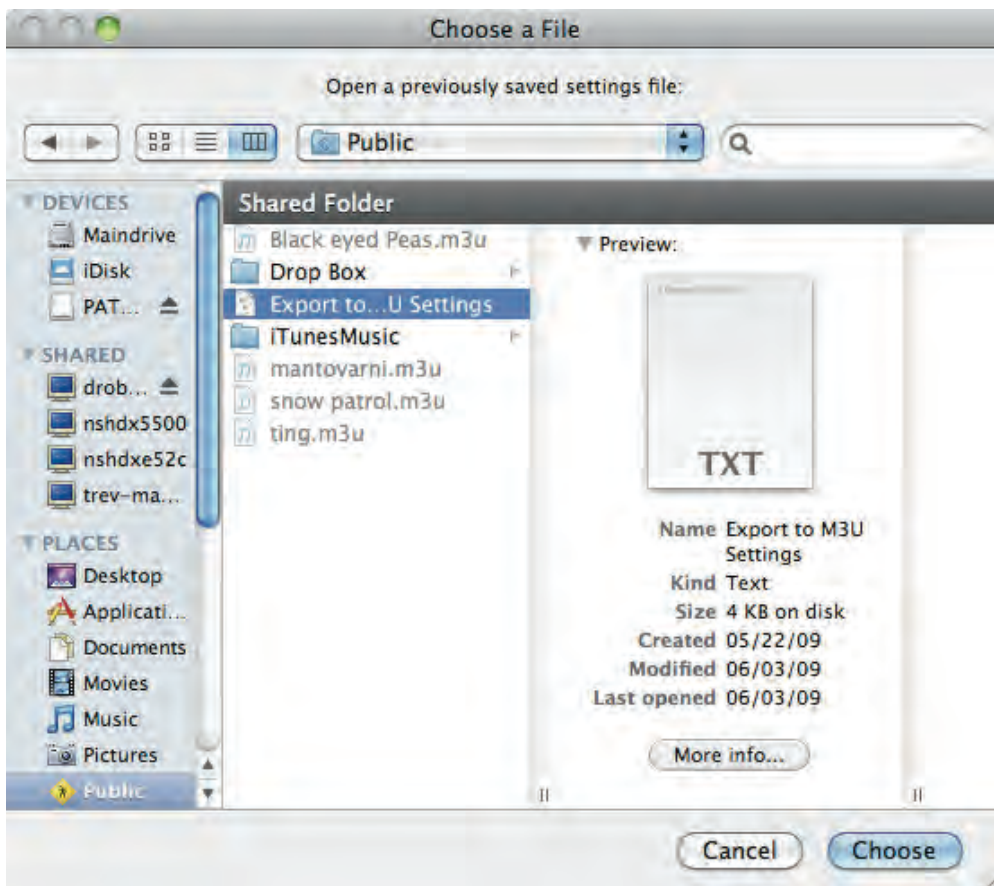
HDX and iTunes Playlists (Mac) Supplement

You may select either the “Wizard” (as described previously), read the settings from a file, or display the current settings. If you choose to display the current settings, a dialogue with settings similar to those shown below following will be displayed.



At this point you can simply quit or go through the wizard setup, or read settings from a file. When you choose to read settings from a file, the following dialogue will be displayed.

Choose a previously saved settings file, then click **Open**. After the file has been read, the following dialogue will be displayed.



Those are all the ways to set up the mappings. If you need something more specialized, you may edit your own settings file by hand, or modify the script directly according to your needs.

