



Network Scanning with the Naim Audio HDX Hard Disk Player

HDX Network Scanning

The HDX scans the network for new and/or updated shares approximately every 15 minutes. A newly connected share may not be discovered immediately but it should appear within 20 minutes.

Once a share is found and is activated the share is then scanned for music. Even though the scanning of music shares takes place at a rate of several hundred tracks per minute the music on the share will only be available for playback once the scanning of that share is complete so, for large collections of music, this could take some time.

The HDX actively searches for shared music sources and it is therefore advisable to remove unnecessary shares exposed on the network, as this will slow down the detection and scanning of music shares.

Shares containing the word "Music" are automatically activated and scanned for music. This behaviour can be disabled or modified under the System Settings page of Desktop Client. For example to automatically activate any folder with the word 'Songs' in the folder name the word 'Songs' should be added to the 'Auto-activate Share Names' list.

To view the album artwork when browsing the shared music, the album cover needs to be either embedded inside the music file (e.g. MP3, AAC, FLAC etc) or each album must have a folder.jpg image stored in the same folder as the music files. The possible valid names of the cover image file can be configured in Desktop Client under the System Settings page. For example if the cover art is saved as cover.jpg then adding 'cover.jpg' to the list will cause the cover art to be displayed when browsing.

Note that Cover Image Names and Share names must be separated by a semi colon (;). Click on 'Apply' to save the new settings.

In the example below the folder name 'Songs' has been added to the Auto Activate Share Names list and 'cover.jpg' to the Cover Image Names list.

Category	Setting	Value
Date and Time	System Date and Time (GMT)	29/07/2008 09:47
	General	Compilation Folders: compilations;various;various artists
Internet Connections	Internet Available	True
Naim Settings	Enable Front Panel IR Receiver	True
	Video Output Type	NTSC
Share Scanning	Auto-activate Share Names	Music;Songs
	Reserved Cover Image Names	folder.jpg;cover.jpg
Utility Service	Supported Formats	wav;mp3;m4a;aac;flac;wma



Sharing Music from a PC on the network

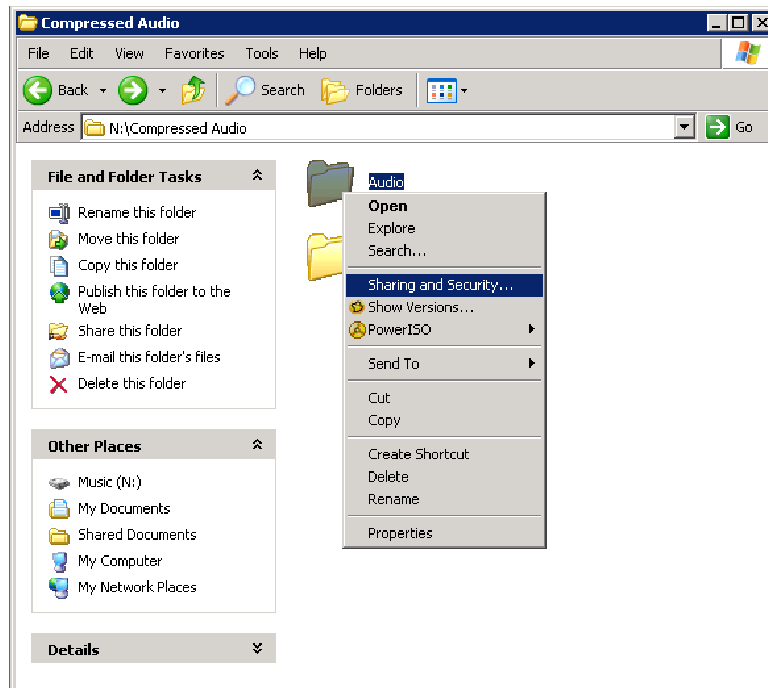
To enable music on a networked Windows PC to be accessed from a Naim HDX Hard Disk Player, the music files must be located in a folder that is shared on the network.

The simplest way to share music from a PC on the network is to place the music files in the Windows 'Shared documents' folder.

The preferred method is to individually share the folders containing the music files. With this method there is then no need to move the files to the Windows 'Shared Documents' folder. It is also possible to allow the HDX to access the music files in a folder but restrict other users access by using folder permissions. Folder permissions are beyond the scope of this document, more information can be found about folder permissions on the Microsoft website.

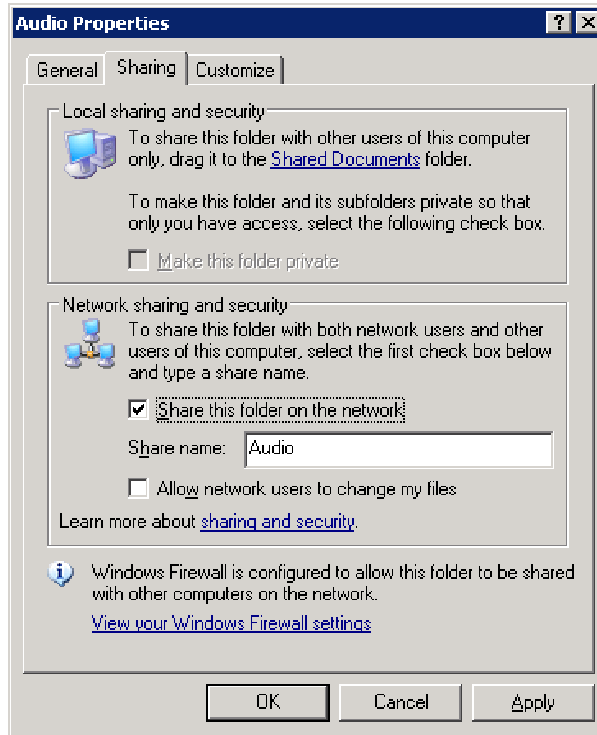
The example below shows how to share the folder "Audio" on a Windows PC called "Moe" to make the music files accessible to the HDX.

- 1) Ensure that any firewall software running is configured to allow the sharing of folders on the network.
- 2) Right-click the folder to share and select the "Sharing and Security" option.





- 3) In the Sharing and Security window select the "Share this folder on the network" checkbox and enter a suitable share name for the folder into the "Share name:" textbox. This is the name by which the folder will be seen on the network and does not have to be the same as the actual folder name itself.



- 4) Select the "OK" button to finish. The folder will now be shared on the local network.

Windows Workgroups and Guest Accounts

If a shared folder is configured as described above but does not appear on the HDX list of network shares within 20 minutes it is possible that the Guest Account is not properly configured. Windows uses the Guest Account to access shared folders on a network. On most versions of Windows the Guest Account is enabled by default, but if this account has been disabled or deleted then folder sharing will not work correctly.

To check the Guest Account settings:

- 1) Control Panel > Administrative Tools > Computer Management > Local Users and Groups > Users > Guest
- 2) If the Guest account is disabled (indicated by a red cross) right click on the Guest Account, select properties then uncheck the 'Account is disabled' box. If the Guest Account has been removed, then a new Guest Account must be created. For more information on creating user accounts refer to the Microsoft website.



In addition to the Guest Account setting, Windows has the ability to allow a guest user to log on to the local machine. For security reasons it is recommended that this feature be disabled.

- 1) Control Panel > Users
- 2) Click on 'Guest Account' and ensure that it is turned off

Enabling the Guest Account but turning off the Guest Account login allows computers on the network to discover the shared folders on the PC, but prevents users being able to logon to the local PC without a password.

For more information concerning Guest accounts, refer to Microsoft's Knowledge base:

<http://support.microsoft.com/kb/300489>

Domain Controllers

Most home networks do not use Domain controllers. Instead, they tend to use the simpler 'Windows Workgroups' method to network computers. Only more complicated networks such as corporate networks or networks based around a Windows Server use domain controllers.

If the network has a domain controller, the HDX will need to log into that domain before it can see any shared folders. The domain will be shown as an item in the "Shares" list (e.g. **DOMAIN_NAME**). The domain username and password should be set up for the domain in the same way as for a password protected shared folder.

Network Attached Storage

If a standalone NAS cannot be found by the HDX, ensure the NAS is configured to be on the NAIM workgroup.

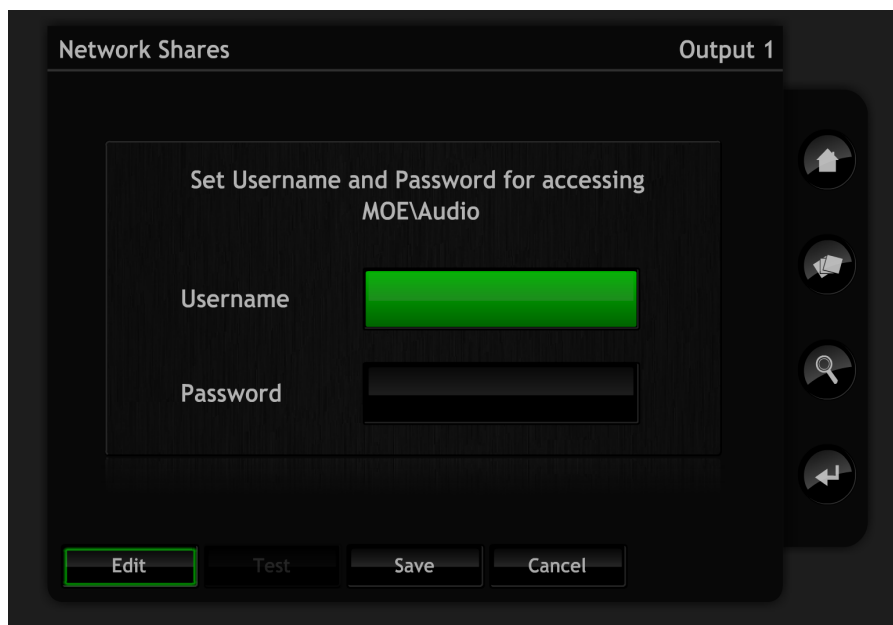


Shared folders with password protection

The HDX allows the user to enter a username and password for shares that are protected by a password. The username and password can either be entered from the External Display interface, the Front Display interface or from the Desktop Client application.

To enter the username and password for the share from the Front Display interface:

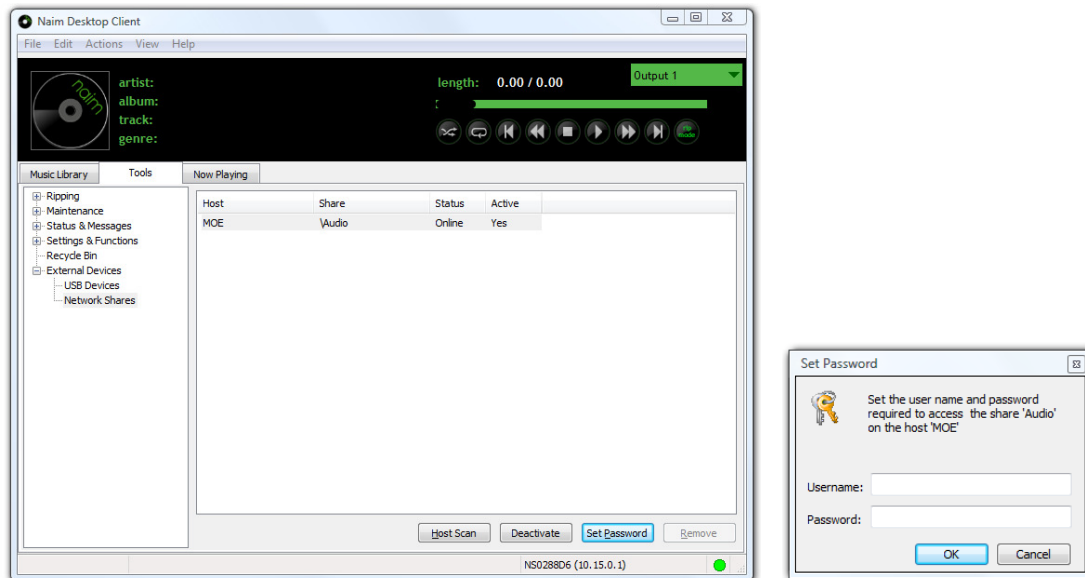
- 1) Select "Home > System > Network Shares"
- 2) Highlight the share to connect to (e.g. **WORKGROUP_NAME\Music**) and touch the "Edit" button
- 3) The following screen will be shown. The username and password for the selected share should be entered into the appropriate boxes. Touch "Save" to save the details





To enter the username and password for the share from the Desktop Client application:

- 1) Select the "Tools" tab under "Network Shares"
- 2) Highlight the share to connect to and press the "Set Password" button:



Common problems with shared folders

- **The status initially appears as "Online" followed by the status changing to "Error" and "Offline".**

This is usually an indication that the shared folder requires a username and password. A record of the attempts made by the HDX to log on to a share is available in the HDX log files. To view the log files select the "Status & Messages -> System Status" option on the "Tools" tab in Desktop Client.

- **Only limited music files in a share are found on a share.**

It is most likely that 'Read' permissions are incorrectly set on those files for the 'logged in' username. Ensure that all files have 'Read' permissions granted for the current username on the computer on which the share is located. If access permissions for a music share are updated a rescan of that share should be forced by de-activating it and then re-activating using either Desktop Client or the HDX External Display or Front Display interface.



- **Pressing the “Host Scan” button on the Network Shares page does not cause the HDX to find a newly connected share.**

The Host Scan button repopulates the Network Shares list with the current list of shares known to the HDX. This does not necessarily mean that anything new on the network will be found instantly as it takes time for PCs and/or Shares to register and propagate on a network. As with any computer network, shares can take up to 20 minutes to become available.

END OF DOCUMENT