



## Foobar2000 configuration for use with the Naim DAC-V1



### Foobar2000

Foobar2000 is a freeware audio player for Windows which supports bit perfect playback of audio files (including high sample rate, 24 bit and DSD files) when used with an appropriate audio playback device that supports exclusive access mode. As such it is an ideal application to use with the Naim DAC-V1.

To use Foobar2000 with the Naim DAC-V1 you will need to install Foobar2000 and configure it appropriately. The required procedure and settings are given in this document. Before you start you will need to download the latest version of Foobar2000 from [www.foobar2000.org](http://www.foobar2000.org).

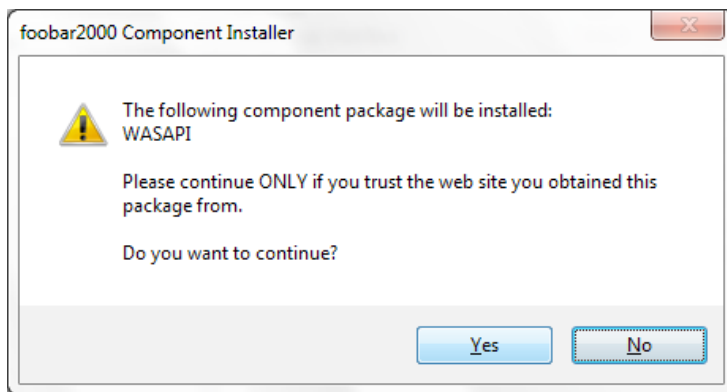


## Installing Foobar2000

Once you have the Foobar2000 installer executable copied to your computer please run the installer by double clicking the Foobar2000 installer icon (or right click the icon and select "Open").

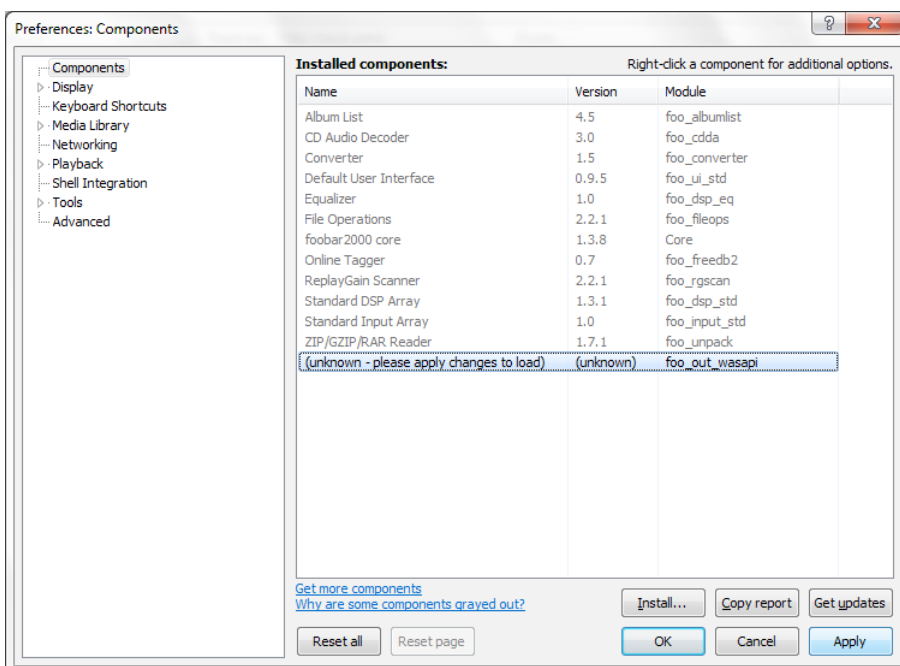
## Configuring Foobar2000

Once Foobar2000 is installed then we need to configure it accordingly for use with the DAC-V1. Firstly we need to install the WASAPI (Windows Audio Session API) driver - this allows the Foobar2000 application to bypass the Windows audio mixer and access the audio device directly. First launch Foobar, if not already launched.

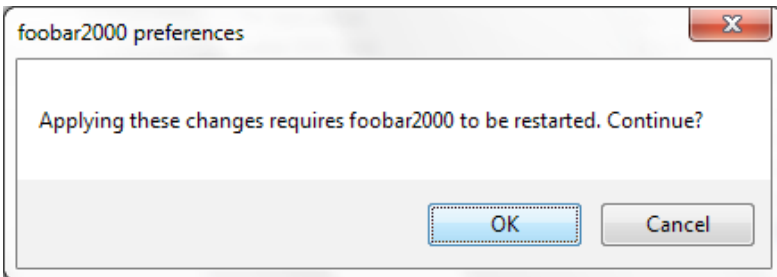


Install the components needed from the Foobar website:  
[https://www.foobar2000.org/components/view/foo\\_out\\_wasapi](https://www.foobar2000.org/components/view/foo_out_wasapi)

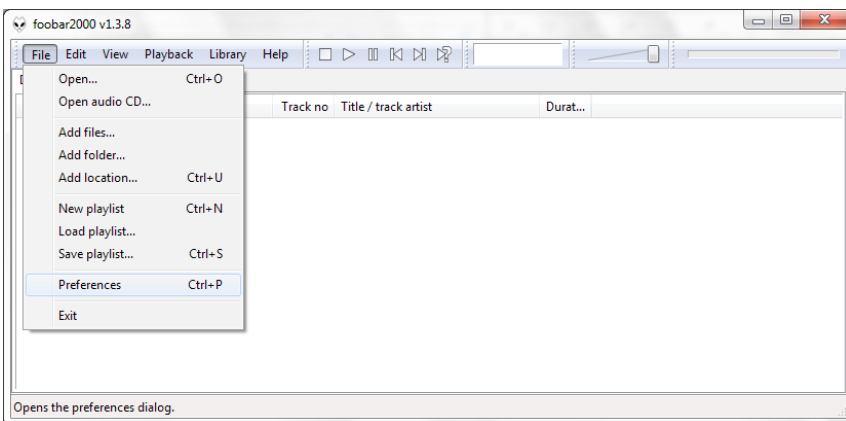
This is an executable file (.exe) and will install the WASAPI component from the File:Preferences screen.



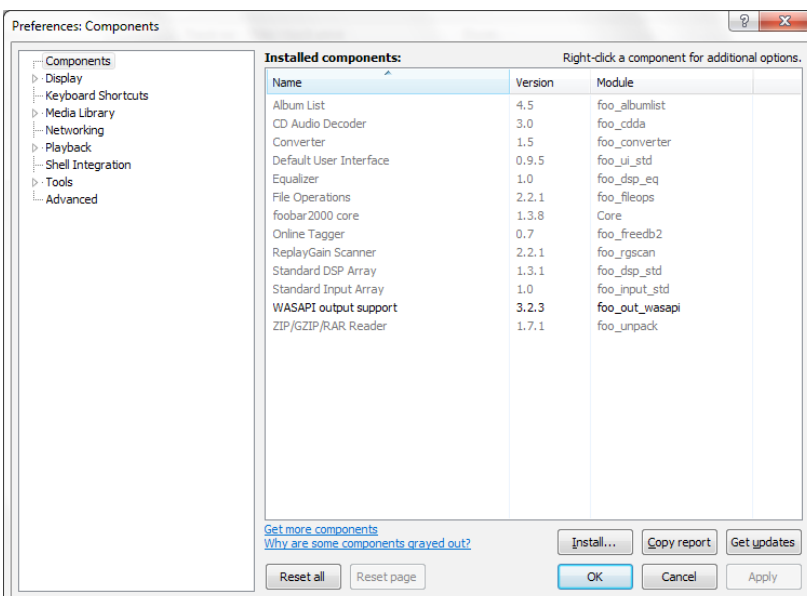
Select the "Components" entry in the left hand window and select the "Install" button.



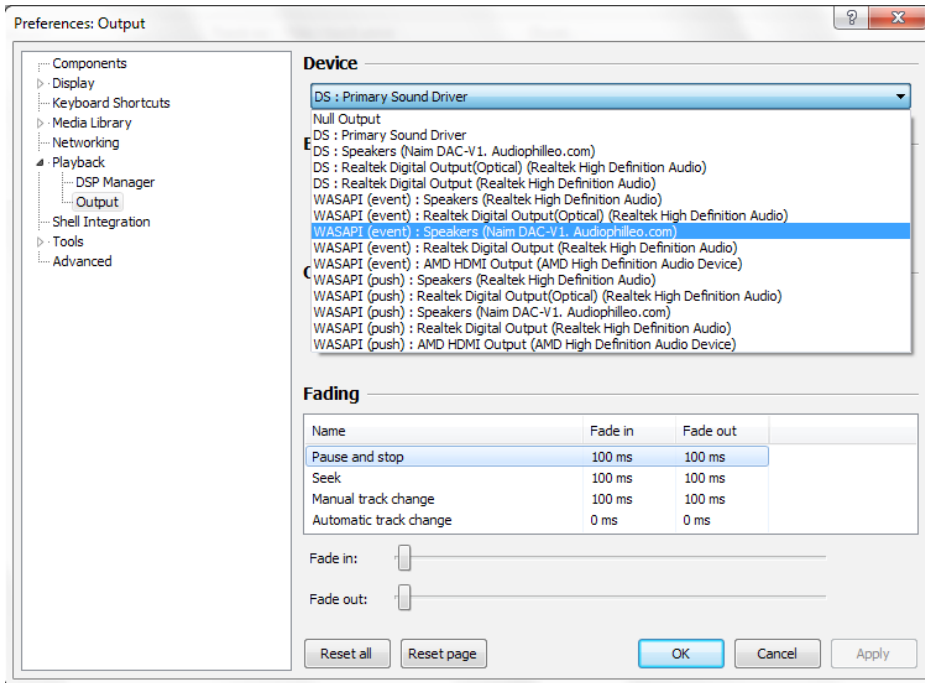
The plugin will be loaded but at this point it is not actually installed - to complete the installation select the "Apply" button ... .. and "OK" to restart the Foobar2000 application. The program will close then immediately reopen.



Once Foobar2000 has reopened then once again please select "Preferences" from the "File" dropdown of the toolbar.

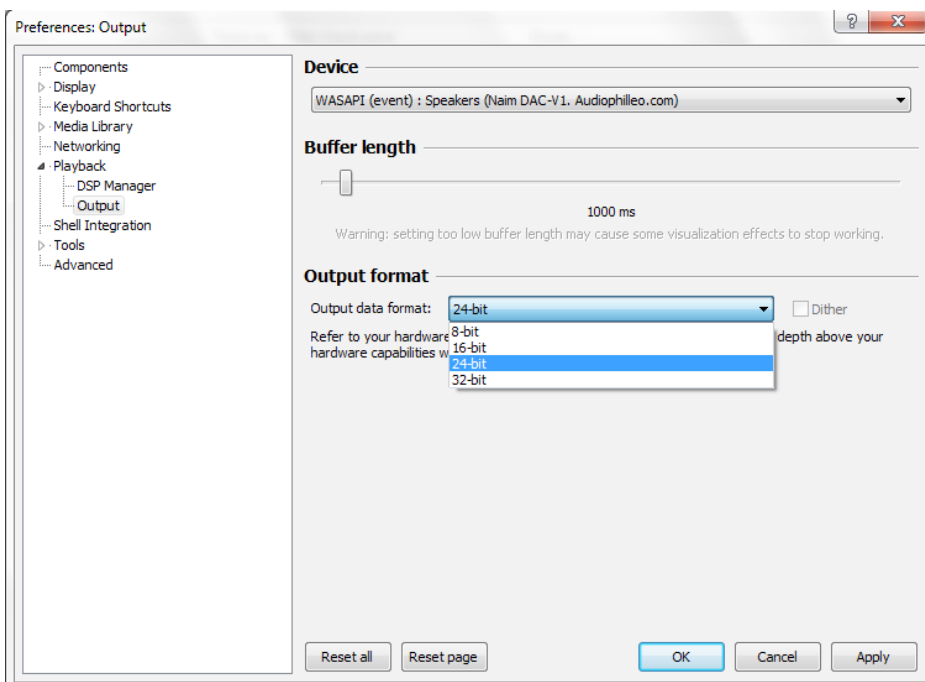


You should now see the WASAPI output support plugin listed in the Installed components list. If this is now listed as above then we can continue to set up the remainder of the required Foobar options.



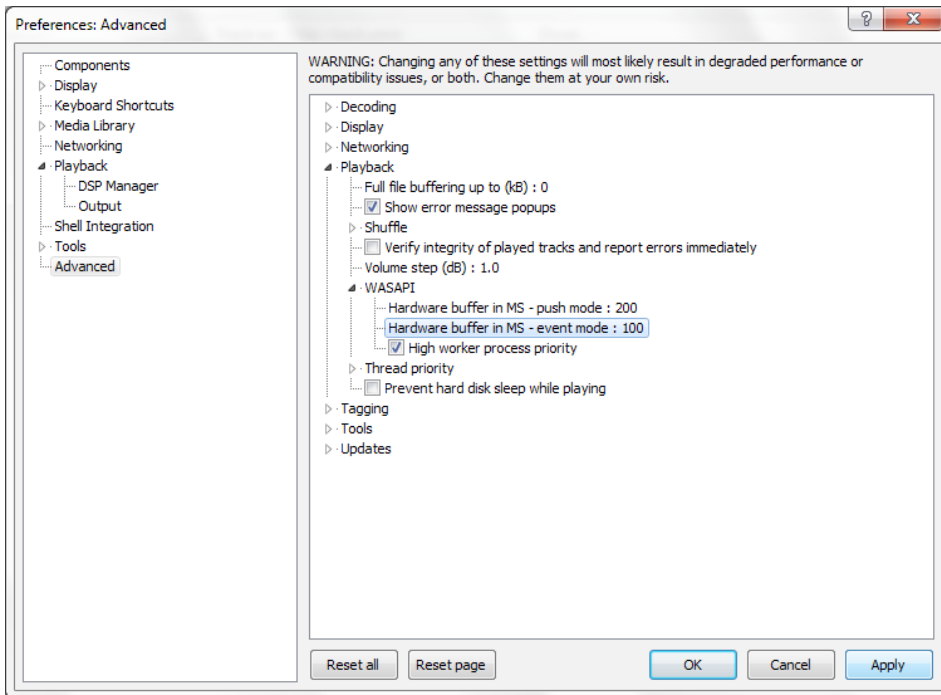
From the same window, select the "Playback" option to expand the playback options tree - then choose "Output".

From the "Device" dropdown list select: "WASAPI (event) : Speakers (Naim DACV1.Audiophile.com)"



... and from the "Output Format" dropdown list select "24-bit".

Then click "Apply".



Now select the "Advanced" entry in the left hand window and open up the "Playback" options in the right hand window, then the "WASAPI" options. Change the value for the event mode hardware buffer from 10 to 100 and check the "High worker process priority" checkbox - these two changes will help to prevent any glitches in audio playback caused by other applications multitasking. Select "Apply" and then "OK".

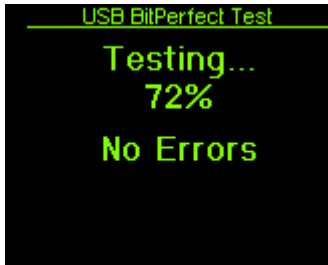
Your installation of Foobar2000 is now configured for use with the Naim DAC-V1.



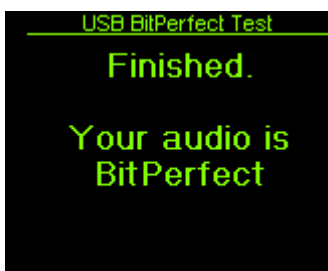
Once you have set up your software then you should test that you are able to drive your DAC "bitperfect" ... this is done by selecting the "Settings" -> "BitPerfect" on your DAC-V1, the DAC-V1 will then display this message.



You should then play the bitperfect test files – please note that due to the way that Foobar2000 works, it will be necessary to reconfigure the output format to 16bit or 24bit as necessary to play the 16bit and 24bit bitperfect test files successfully - as the file begins to play the DAC-V1 will display this message.



As the audio file progresses, the DAC-V1 will update the display to indicate how far through the test file it is, if any errors are found then they will be shown on this display.



Once the file has completed then you should see the following.

If you do not then please check your settings are the same as above and retest.

## DSD Setup

DSD setup with Foobar is not for the faint of heart! If you plan to use DSD files a lot you may wish to look at other options such as JRiver.

You need to change the main driver used from the Naim driver to Foobar's DSD custom driver, then point that to an ASIO4ALL driver, and then point that to the Dac-V1 driver.

There are various setup documents posted on the web such as this one here:  
<http://www.audiostream.com/content/how-play-dsd-file-using-foobar2000#ssITJKdE-cy6re6MF.97>

In addition you also need to install the ASIO driver too.



The setup is as follows:

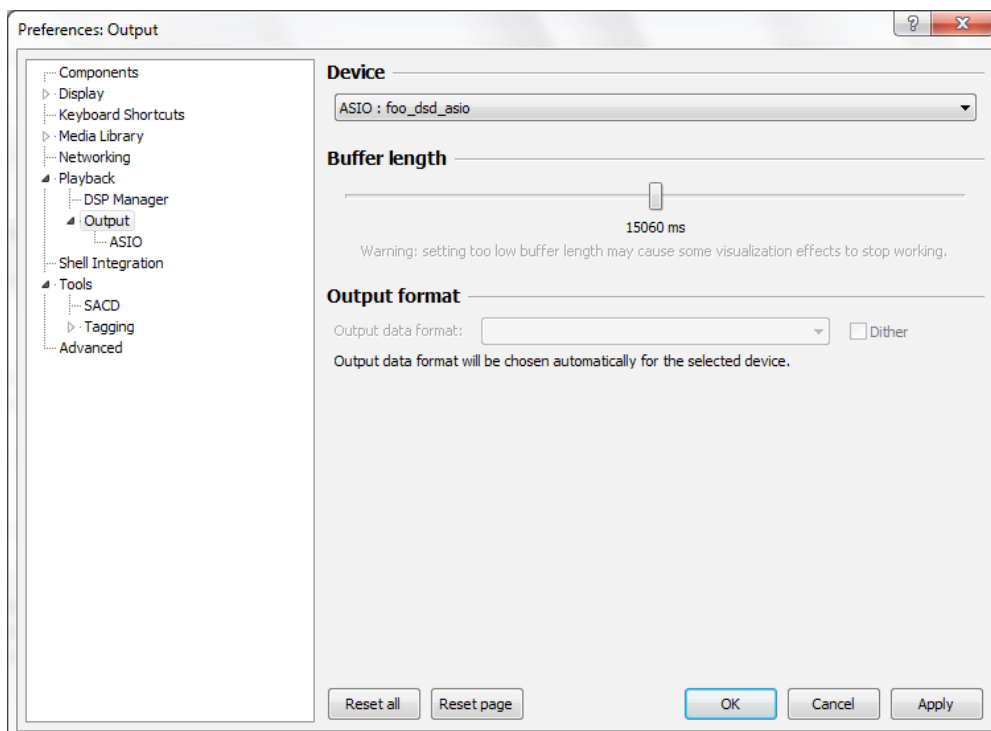
1. Install the ASIO driver from <http://www.asio4all.com/>
2. Install the ASIO Proxy driver from [http://sourceforge.net/projects/sacddecoder/files/foo\\_dsd\\_asio/](http://sourceforge.net/projects/sacddecoder/files/foo_dsd_asio/)
3. Download the ASIO output plug-in for Foobar2000 from [http://www.foobar2000.org/components/view/foo\\_out\\_asio](http://www.foobar2000.org/components/view/foo_out_asio)

Run the installer and it will launch Foobar and install the component. Click apply and Foobar will restart.

4. Download the SACD Decoder plug-in for Foobar2000 from [http://sourceforge.net/projects/sacddecoder/files/foo\\_input\\_sacd/foo\\_input\\_sacd-0.8.4.zip/download](http://sourceforge.net/projects/sacddecoder/files/foo_input_sacd/foo_input_sacd-0.8.4.zip/download) Open the new zip folder and double- click ASIOProxyInstall.exe. Follow the onscreen instructions using the default install.

5. Once all drivers and components are installed you need to set up Foobar from File>Preferences: (Note: File>Preferences and Library>Configure take you to the same place)

1. Select the Output Driver  
Playback > Output  
Device dropdown > ASIO:foo\_dsd\_asio  
Set buffer to approx 15,000ms.





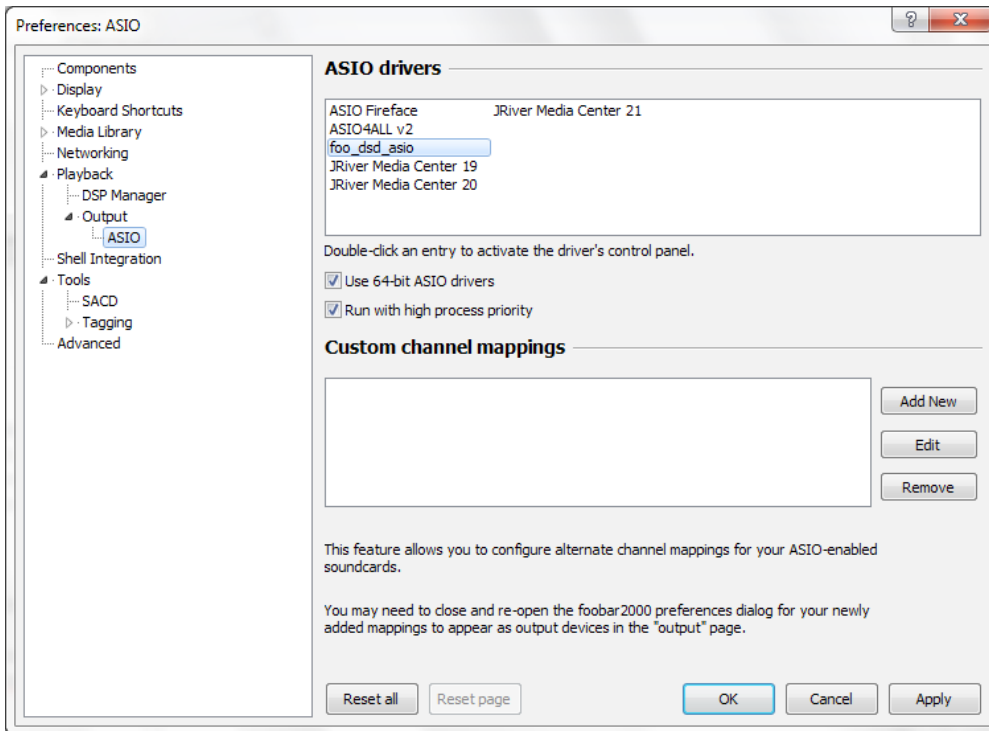
## 2. Configure Drivers

Playback > Output > ASIO

Check: 64-bit ASIO drivers

Check: Run with high process priority

Double click the two drivers listed to access driver options.

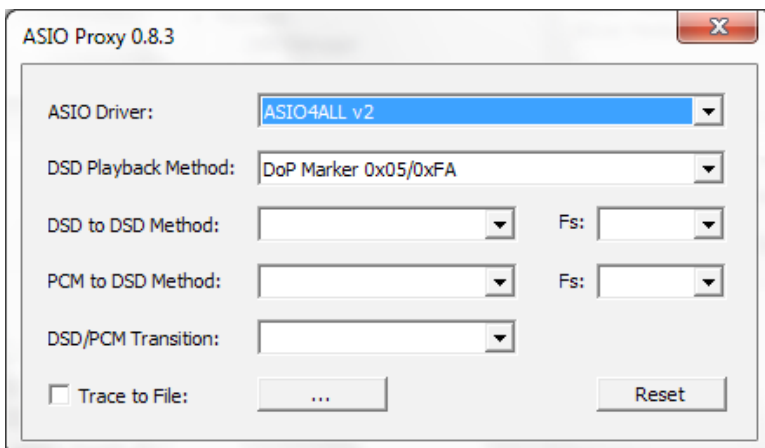


### 2a. foo\_dsd\_asio

Select ASIO4ALL.

Select playback method

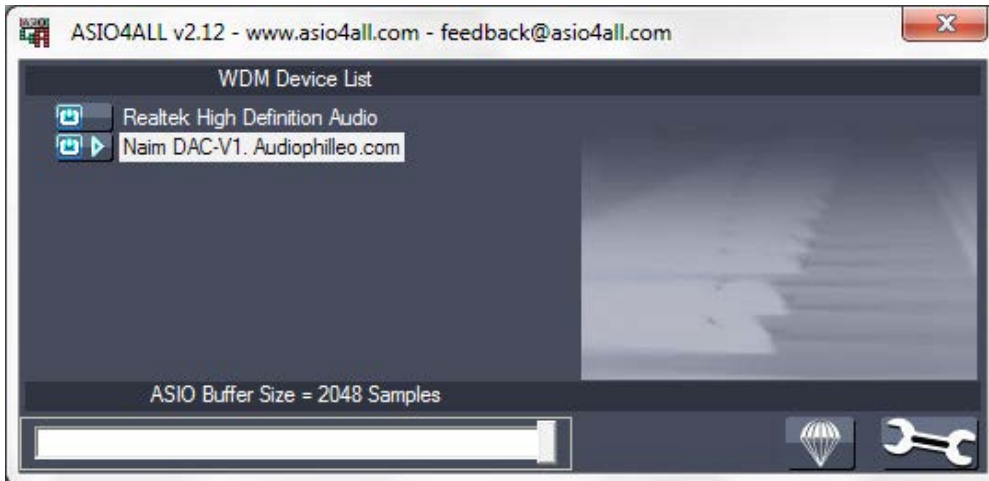
DoP Marker.



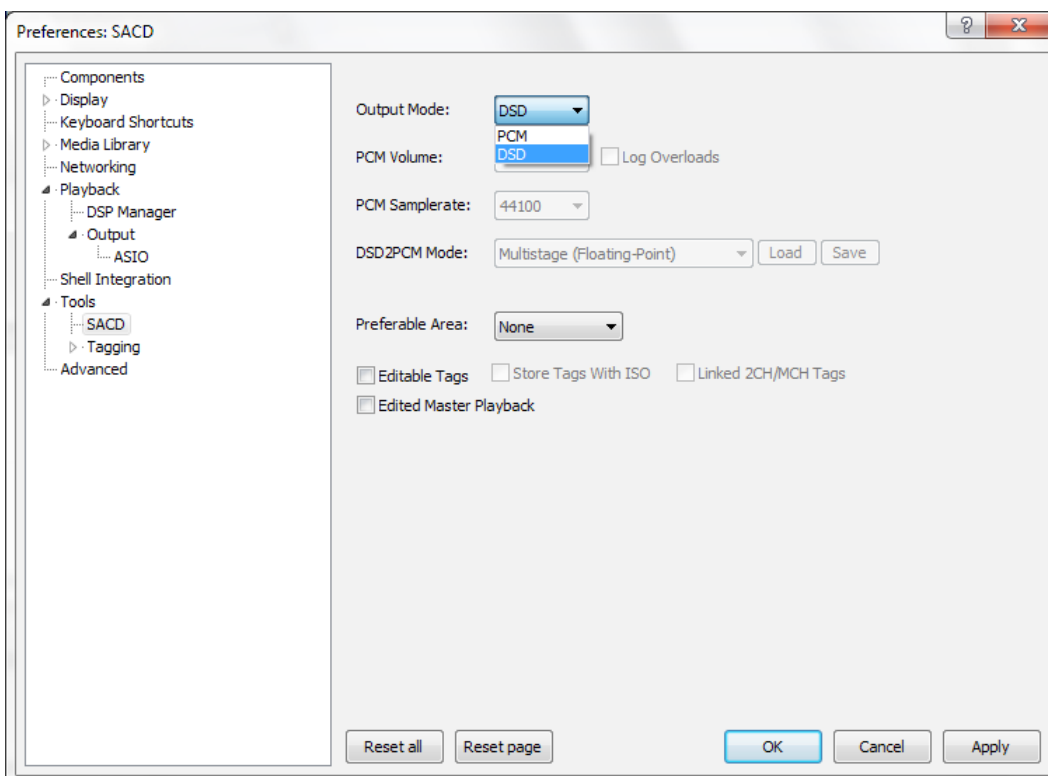




- 2b. ASIO4ALL  
select DAC-V1 from device list.  
Set buffer sample rate to 2048.



3. Configure Output Mode  
Tools > SACD  
Output mode – DSD



Bitperfect files will still work with DSD set up.

High Res files will not. Set the Driver back to Naim DAC-V1 for these to work.  
Go to the Playback > Output > Device dropdown and select DAC-V1.